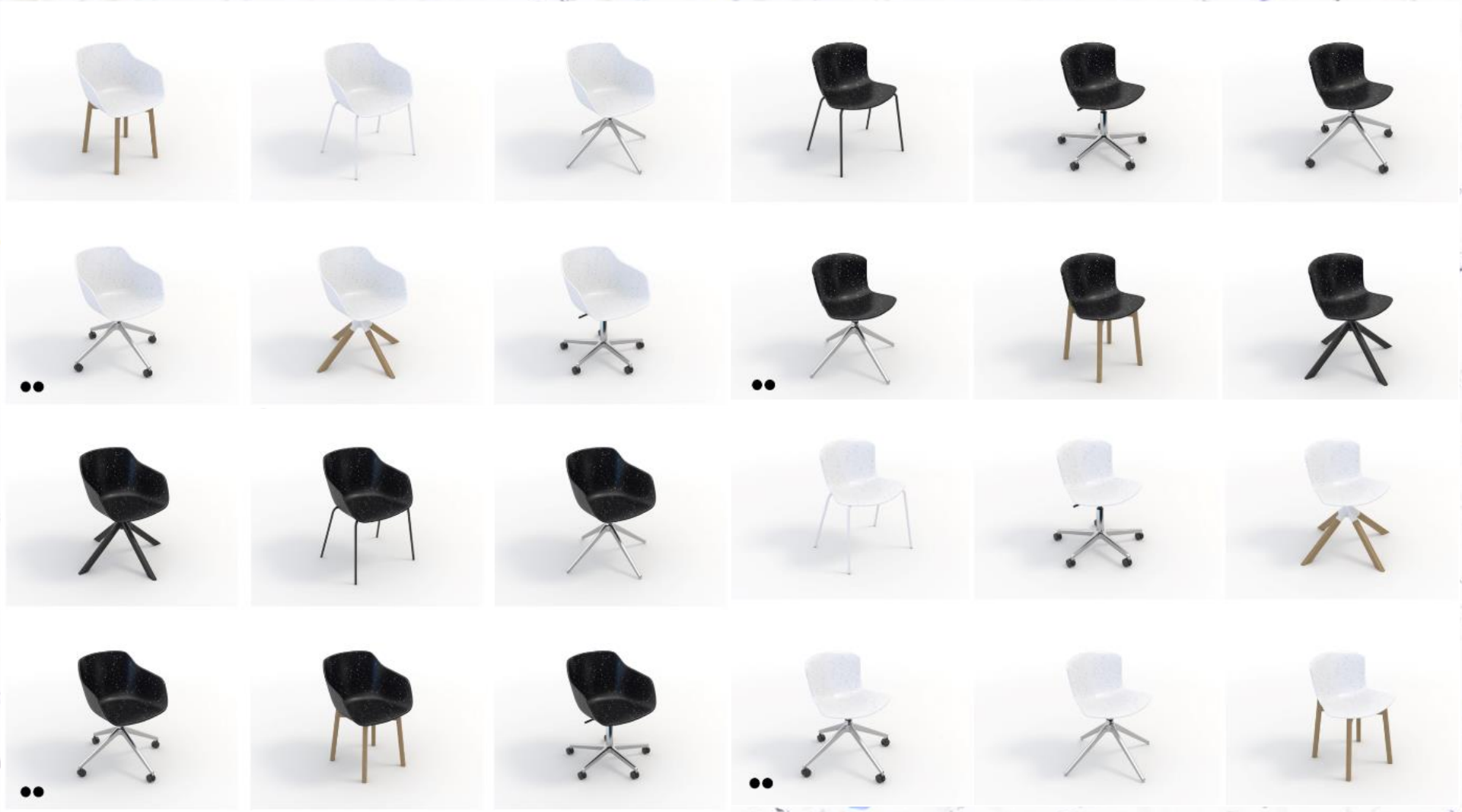




JIM & MARIUS

by MOORE DESIGN

MOORE



JIM & MARIUS

by MOORE DESIGN

CHAIR | JIM



MOORE

The JIM chair is the result of several months of research and development to combine material, design, and ergonomics.

JIM is equipped with a complete collection to meet various needs: home, work, relaxation, meetings, reading. Its timeless design, finishes, and different bases allow you to personalize your chair according to your space.

The use of the material Le Pavé® combined with a thermoforming technique allowed us to retain the original design created by Studio Boy.

Giving meaning and use to waste.

The production of a JIM chair allows:

Recycling 14.3 KG of plastic

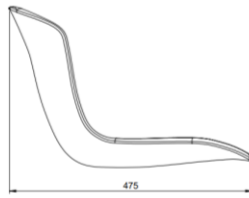
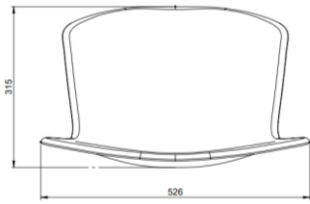
Saving 24.48 KG of CO2.



CHAIR | JIM – 4 METALLIC LEGS

DIMENSIONS

L 520 x H 800 x P 475 mm



CHAIR SHELL FINISHES



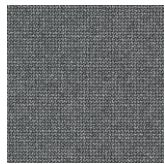
METALLIC LEG FINISHES



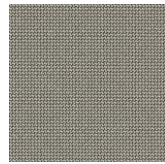
SEAT CUSHION FINISHES



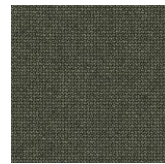
Dark Gray



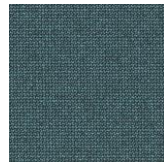
Light Gray



Light Beige



Heather Green



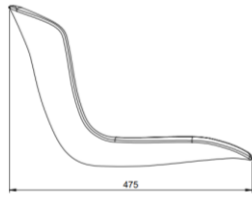
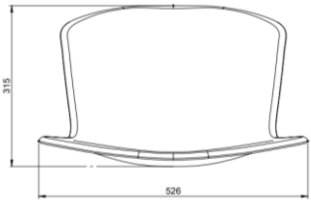
Blue



CHAIR | JIM – 5 SWIVEL CASTORS WITH TILTING

DIMENSIONS

L 520 x H 800 x P 475 mm



CHAIR SHELL FINISHES



METALLIC LEG FINISHES



Black or white

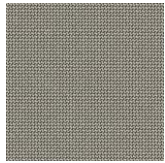
SEAT CUSHION FINISHES



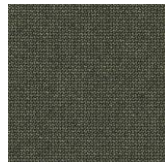
Dark
Gray



Light
Gray



Light
Beige



Heather
Green



Blue





The MARIUS armchair is the result of several months of research and development to combine material, design, and ergonomics.

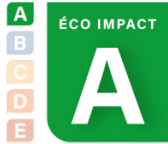
MARIUS is equipped with a complete collection to meet various needs: home, work, relaxation, meetings, and reading. Its timeless design, finishes, and different bases allow you to personalize your chair according to your space.

The use of the material Le Pavé® combined with a thermoforming technique has allowed us to retain the original design created by the Studio Boy agency

Giving meaning and use to waste.

The production of a JIM chair allows:

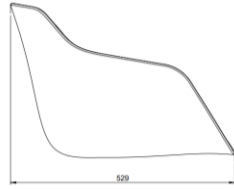
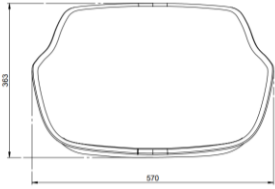
Recycling 14.3 KG of plastic



ARMCHAIR | MARIUS – 4 METALLIC LEGS

DIMENSIONS

L 570 x H 813 x P 529 mm



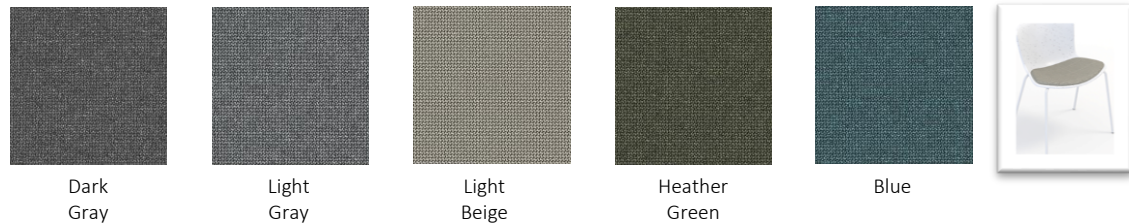
CHAIR SHELL FINISHES



METALLIC LEG FINISHES



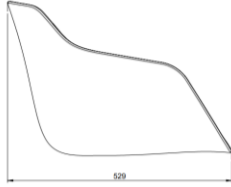
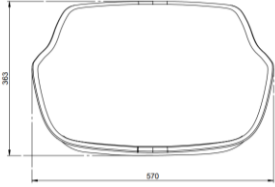
SEAT CUSHION FINISHES



ARMCHAIR | MARIUS – 4 METALLIC LEGS

DIMENSIONS

L 570 x H 813 x P 529 mm



CHAIR SHELL FINISHES



PLASTIC LEG FINISHES



Black or white

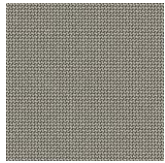
SEAT CUSHION FINISHES



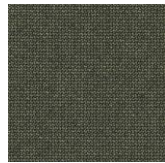
Dark
Gray



Light
Gray



Light
Beige



Heather
Green



Blue

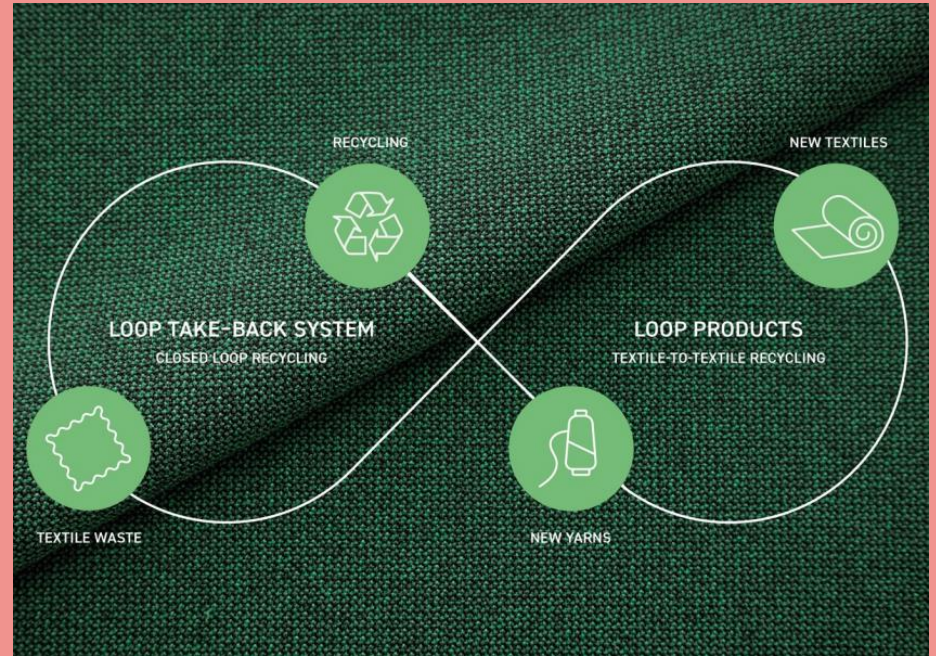


MOORE x GABRIEL

It seemed important for us to choose a fabric in line with our approach. The work done with Gabriel gave it all its meaning.

The choice fell on the fabric RENEWED LOOP: "From Textile to Textile" - made from fabric scraps to create new fabric.

Manufactured from a blend of textile waste and post-consumer recycled products, Renewed Loop is the first in a series of revolutionary recycled fabrics from textile to textile. With its vibrant mixed expression and content of textile waste, Renewed Loop offers an innovative fusion of circularity, technology, and aesthetics. It is designed according to the same high-quality standards as any other Gabriel textile and can be recycled again and again.



Gabriel[®]

Environmental Specifications:

- Made in France
- 100% recycled – 100% recyclable
- Le Pavé® identifies plastic waste throughout France and transforms it into eco-construction materials.
- Each shell is made from 100% plastic waste: bottle caps and waste from the cosmetic industry (such as shampoo bottles), with no added resin.
- Total weight: 7.28 kg





These attributes can assist you in obtaining a BREEAM, Ska, and WELL building certification...


The production of a MARIUS armchair allows for the recycling of 14.3 kg of plastic and saving 24.48 kg of CO2.


JULIEN DIARD

FOUNDER & CEO MOORE DESIGN

 +33 6 99 71 80 80

 jd@mooredesign.fr

 5 rue Bachaumont - 75002 Paris

 www.mooredesign.fr

MOORE